



Seattle Wings Chapter WA-A

Periodic News Letter
April 2024



Route 66 Museum Artifact. Photography by Newsletter Editor.

Have you checked out the **Chapter "A" Website** lately?
Our Webmaster works on it almost daily, Check it out!



<https://www.gwta-waa.com>

[Calendar](#) [Newsletters & Emails](#)

[Local Chapter Meeting Places](#) [Photos](#) [Staff](#) [Forms](#)

[Goldwing Technical Service Bulletins - 1988 through 2012.](#)

AND SOOOOO much more!

Join Us on the 4th Saturday of Every Month for our monthly meeting.

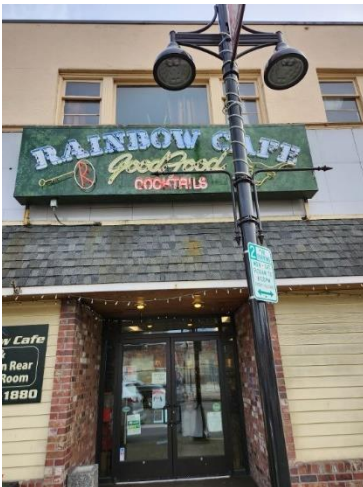
Next Meetings are April 27th and May 25th , 2024.

Breakfast starting at 9:00am with meeting following at 10:00am.

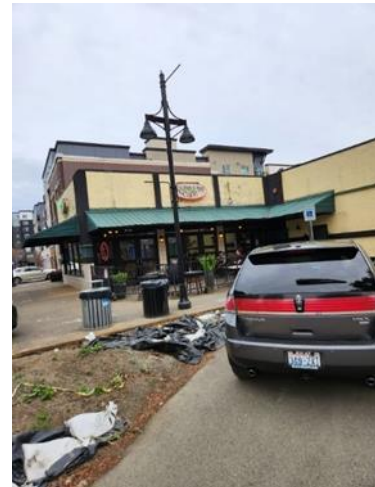
Rainbow Cafe Restaurant.

112 E. Main St.
Auburn, WA. 98002
(253) 833-1880

Weather Permitting Rides after the meeting.
Hope to see you there!



Front Entrance to Rainbow Cafe
Cafe



Rear entrance to Rainbow

There is limited parking in the front but plenty of parking in the back.

The Famous WA "A" 5 Aces Ride



June 29th ,2024!.....Details forthcoming.

At Chapter "**A**" We've noticed that 4 months each year have an additional 5th Saturday. Everybody loves getting an extra Saturday, of course. We at Chapter "A" honor those extra Saturdays with an "**Ice Cream Ride**" aka **The Famous WA "A" 5 Aces Ride**. Come ride with us, on these 5th Saturdays and **we will buy you a cone.**

Suggestions for destinations are welcome.

Greetings from our Chapter:

Chapter Director (Open Position)

Asst Chapter Director (Open Position)

Both left due to changes in their lives.
Think about the support you'll get from
all the former directors in our club.

Chapter Treasurer



Charlie and Ann Butters



Chapter “A” Stores:

Come see Joe Leon at the meetings!

He might just have that perfect sticker, patch, shirt or hat for you.

[illegible]

DID YOU KNOW?

Chapter "A" became officially operational in September 1980 (This is our 44th year). The Chapter CD Lee Adams was known around the area as the Ape man due to he had so many Apes attached to his bike. They almost covered the bike. I, Don Hatley, was ACD at the time and took over as CD when Lee was transferred to Texas by Boeing. It only made sense that the Ape would continue to be our mascot.

--Don Hatley, original member



March Five Aces Ride

Hey Chapter "A" - The Weather couldn't have been better for the 5 Aces Ride last Saturday!(March 30th) Mt. Rainier was gorgeous against the blue sky and the temps were perfect for riding! We were all gathered for kick stands up at the Rainbow Cafe at 11:00am and we were off for a nice ride along secondary roads along West Valley road through Sumner working our way around Puyallup to the Cold Stone Ice Creamery on South Hill just off of Meeker St. A fun ride with a great ending. For those that couldn't make it you missed a nice 5 Aces.

Great riding weather has arrived, so get out there and enjoy it....

Looking forward to seeing everybody at the Rainbow Cafe for our April 27th Meeting
Our GWTA State Director Vonda Brest will be attending.

--Longtime Member Don Hatley **"Don't Miss the Fun"**

A Dennis Murphy Update:

I've been telling the story about my Wing for a bit.

It had a vibration. I was pretty sure that it was coming from the front of the bike. I bought some new Bridgestone's for it and had Mike Breise change them onto some different wheels along with balancing beads.

The vibration is gone and I'm pretty sure that the vibration was caused by way too much lube when mounting the tires that were taken off.

Mike said that the balancing beads that I had put in were clumped up in the lube. They were not allowed to move around in the tire as designed.

Now it's back to what it's supposed to be. Fun to ride!

We put in some LED lights in the trunk. They work with a mercury switch. I think that the switch was bad and replaced it today along with wiring the same LED's into the top of the saddlebags. Now when I open the trunk, I have light in the saddlebags too. I did this also with my 2012 when I had it. Works great.



Tomorrow will be another day of trying to get as much done as I can as I have surgery on my left torn rotator cuff on Monday April 15th. That will put me out of commission for a couple of months. UPDATE: Surgery went well.

Webmaster



Do you have a Tire Pressure Monitoring System (TPMS) on your Honda bike or trike?

Either Original Equipment Manufacturer (OEM) or aftermarket? The purpose of a TPMS is to prevent traffic accidents, poor fuel economy, and increased tire wear due to under-inflated tires through early recognition of a hazardous state of the tires.

The fourth generation Gold Wing (1988 - 2000) does not have a TPMS, the fifth generation Gold Wing (2001 - 2017) OEM system falls flat on its face with only an idiot light to warn the rider that one of the tires is experiencing a problem, but there is no indication of which tire it is. And from what I understand, not all the sixth generation systems (2018 - 2024) are any better than the fifth generation. If you have a trike, the OEM system was most likely disabled so you have to get on your hands and knees and use the old pencil pressure gauge.

As you may already know, the batteries in the OEM wheel sensors will typically last for six to eight years. At that point Honda says you need to replace the sensors. The sensors, when they were still available, were about \$200 each. To replace the sensors, the tires needed to be removed from the wheels. If you are not a mechanic, that was a costly proposition. With shop charges at or above \$125 an hour and the sensors \$200 each, you were looking at close to \$600 for sensor replacement. And if it was done in conjunction with installation of new tires, you were looking at well over \$1000.

Unfortunately, the fifth generation Gold Wing sensors are no longer available but on the plus side, the batteries can be replaced if you have the ability. I believe the sixth generation sensors are still available but at a cost of about \$200 each.

I have an OEM TPMS system on my 2017 GL1800. It doesn't give any information about the tires until they are below some predetermined pressure or flat. That is when you see the dreaded TPMS idiot light.

Knowing all this, it is a no-brainer to replace the OEM TPMS with an aftermarket system that gives you much more info and is extremely simple to service by anyone.

Previously, I used the Tire Gard on my GL1500, and I used the TireSafeGard on the 2003 GL1800 that I no longer own.

In August of 2016, I swapped the Tire Gard on the GL1500 to the FOBBO Bike 2 blue-tooth TPMS system. I liked it so much that I am now using an identical system on my new 2017 GL1800.

The OEM TPMS system on the 2017 is okay I guess but with the aftermarket TPMS systems there is so much more information available. The OEM system has an idiot light that says there may be a problem.

Most aftermarket systems display tire pressure, tire temperature and tire sensor battery condition. The sensor batteries are easier to replace than the batteries in a flashlight as opposed to the OEM system which requires removal of the tire from the wheel.

I had the TireSafeGard TPMS on my 2003 GL1800 and it worked well, except the

display is not waterproof and needed to be stowed away when in a rain storm. The TireSafeGard sold for \$169 on Amazon but is no longer available. I think you may be able to find them on eBay.



TireSafeGard



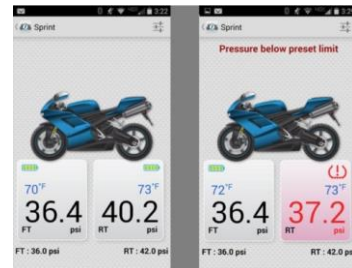
Tire Gard

I had been using the Tire Gard from Show Chrome on the GL1500. The Tire Gard now sells for under \$100 and can be found on eBay. Quite a price reduction from \$149 when I first bought one. This display too is not waterproof and needs to be stowed away when in a rain storm. There are some pretty good reviews of the above systems on the internet.

For \$99 or less, an FOBOT Bike 2 Blue Tooth TPMS system using a Smart Phone Application (App) started to look promising to me. It has audible and visual alerts. I recently bought one on sale from Honda Direct Line for \$67. There are pretty good reviews of this system on the internet as well.



FOBO Bike 2 Components in the package.



Screen Display on your Smart Phone.

All the reviews I have seen on the system are positive and the price is right. I just looked them up a couple of days ago (April 2024) and you can find them on Amazon for about \$99 for a two wheeled bike and \$82.99 for a trike. I liked this system so much that I bought one and gave it as a Christmas Present to a close friend a couple of years ago.



**Mike Briesse
WA-A Webmaster**

Sunshine Committee

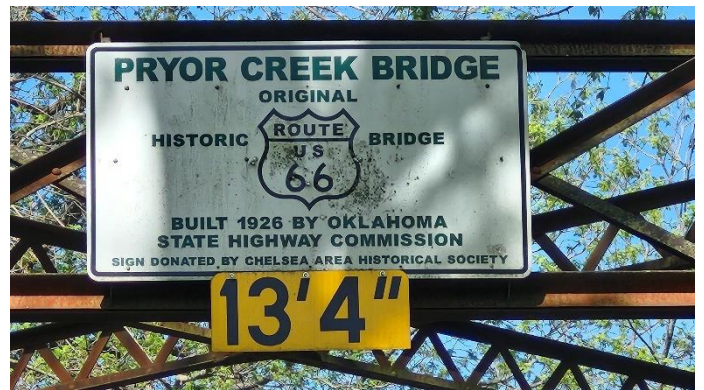


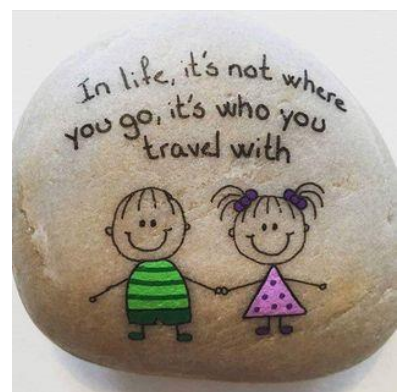
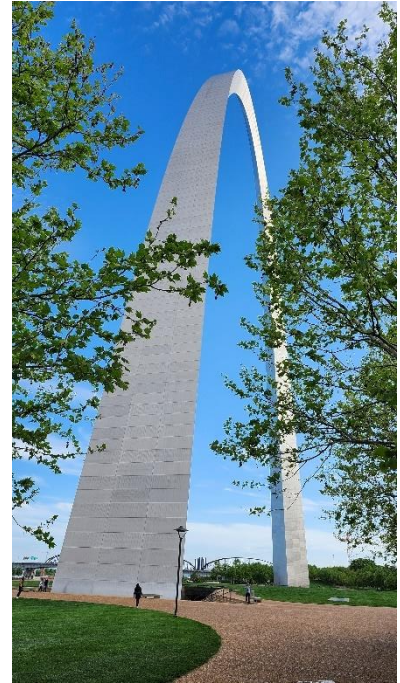
Jocelyn and Michael Piechowiak



Getting our Kicks on Route 66 in April.







See you at the August meeting.

Hugs.

Jocelyn "Sunshine" Piechowiak

Goldwing Preventative Maintenance



Greetings to all.

Dennis Murphy

I love to go online and look for new tools. Especially for working on motorcycles. I found these JIS screwdrivers on cyclemax.com and the article that follows explains what they are and why we need them to work on our motorcycles. Dennis

And they also sell a 3 bit set for \$5.75.

JIS Cross-Head Screwdriver Set (JDVA-16632)



Item: JDVA-16632 Vessel (in stock)

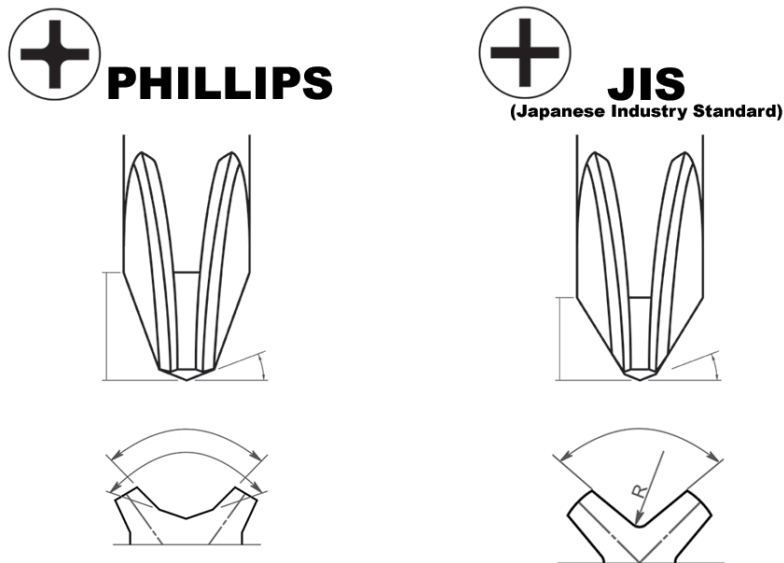
This is a 3 piece set of JIS screwdrivers. These cross-head JIS screwdrivers are made by Vessel Tools and are designed to be used on JIS screws commonly found on Japanese motorcycles. This is the Megadora series. Megadora models are equipped with the most advanced triple-molded handle for comfort. The corners of the hexagonal cross-section are molded with elastomer for a soft fit and high torque transmission. These very high quality screwdrivers have magnetic tips made of hardened high-grade tool steel. Each set includes a P1, P2 and P3 size screwdriver. A-16632

The Phillips® versus JIS (Japanese Industrial Standard) Phenomenon

One of the most recognized types of screwdrivers in the US is the traditional Phillips®screwdriver. It's probably the most commonly used driver in your toolbox for fastening cross-point screws. Do you experience “cam-outs” and damage to screws when using a Phillips®screwdriver on Japanese brand products (motorcycles, ATV's, automobiles, etc.)? If so, then it may be a “JIS” (Japanese Industrial Standard) screw. A JIS and a Phillips® screw may look the same to the human eye, but they have completely different profiles and it's important to know the difference.

Henry Phillips invented and patented the Phillips® design in 1936. The Phillips® design was a great solution for the automobile production lines since it was designed to “cam-out” after a certain torque was reached to prevent over-tightening of the screw. Another advantage over the use of flat head screws was that the Phillips® self-centering design allowed operators to engage the tip of the driver into the screw head very quickly and easily.

Japanese engineers developed their own cross-point design similar to that of the Phillips®. The Japanese cross-point drivers also have the self-centering and quick tool and screw engagement, however the “JIS” (Japanese Industrial Standard) design allowed torque and over-tightening to be controlled by the operator and not at the head of the screw. This key difference is why Phillips screwdrivers cannot properly engage "JIS" (Japanese Industrial Standard) screws. It's very hard to distinguish the difference between a Phillips® versus a JIS screw without magnification. Some JIS screws can be easily identified by a single dot or dimple on the head of the screw. However, it could be difficult to identify one from the other if the screw doesn't have a marking.



You can see the difference between the two cross-point designs in the above diagram. The Phillips® and the Japanese JIS profiles may look the same, but they are indeed significantly different when you look at them under close magnification.

An overall rule of thumb is that Japanese cross-point screwdrivers are recommended in order to help prevent cam-outs and screw damage when working on Japanese brand products.

Author: Dennis Murphy



CHUCKLES!

Just a funny story for the newsletter,

About 25 years ago, some friends and myself went to a Boehm's candy shop in Issaquah. While getting back on the Wings, and starting them up. a car pulled in on my right and parked.

The lady gets out of her car and asked if we could wait to start the bikes as she has a sleeping child in the back seat. She didn't realize that the bikes were already started and in motion. It was hilarious when she finally figured it out.

I guess she thought all motorcycles were loud and obnoxious.

Dennis Murphy.



April Celebrations

Birthdays:

13th Joe Diambri

17th Tina Hatley

20th Sue Ennaro

25th Chris Johnson



Anniversaries:

12th Joe & Sue Enaro

30th Don & Tina Hatley

Hey "A". We would love to shout out your special days! Contact Jocelyn.

Chapter WA “A” Officers and Staff

Chapter Director (CD) – Currently an OPEN position at time of press.

Assistant Chapter Director (ACD) - Currently an OPEN position at time of press.

Webmaster - Mike Brieese

Technical Coordinator (GW Maint Info) - Dennis Murphy

Newsletter Editor – Jocelyn Piechowiak

Phone Tree - Bill Holt

Facebook Coordinator – Jocelyn Piechowiak

Sunshine Committee – Michael and Jocelyn Piechowiak

50/50 Coordinator – Dianna Hemmi

The Chapter has several positions open and are looking for members who would love to fill them!

Chapter Director of GWTA-WA-A
Asst Chapter Director of GWTA-WA-A
Ride Coordinator

Activity Coordinator (monthly) aka Social Coordinator.

Booking a place to gather once a month or so for the group. Coordinate with Officers to promote gatherings.

Chapter Historian

---So Step forward, “volunteer” and join in the fun!



WA“A” Activities

“Chapter “A” has been enjoying FUN since September 1980.

Upcoming events

Be sure to check our website <https://www.gwta-waa.com> for details on the big events in 2024.

April 2024

1st Saturday – Visit Chapter Q in Centralia, WA.

2nd Saturday – Visit Chapter in Everett, WA.

April 20th – Rider Training. Rainier Hills Christian Fellowship, Buckley WA Details forthcoming.

4th Saturday. April 27th Monthly GWTA-WA-A Breakfast Chapter Meeting.

May 2024

1st Saturday – Visit Chapter Q in Centralia, WA.

2nd Saturday – Visit Chapter C in Everett, WA.

4th Saturday. May 25th. Monthly GWTA-WA-A Breakfast Chapter Meeting.

June 2024

1st Saturday – Visit Chapter Q in Centralia, WA.

2nd Saturday – Visit Chapter C in Everett, WA.

4th Saturday. June 22nd. Monthly GWTA-WA-A Breakfast Chapter Meeting.

5th Saturday, June 29th Five Aces Ride. Time and Place of departure to be announced.

July 2024

1st Saturday – Visit Chapter Q in Centralia, WA.

2nd Saturday – Visit Chapter C in Everett, WA.

4th Saturday. July 27th. Monthly GWTA-WA-A Breakfast Chapter Meeting.

GWTA WA Chapter "A" Seattle Wings

Newsletter and Phone Tree Information Request

The following request is for the purpose of gathering current information on the Chapter "A" roster. It will assist in the accuracy and correct mailing of the Chapter Newsletter to our members and followers. It will also assist us in the timely communication of impromptu rides and any changes in planned rides or events via the Chapter "A" Phone Tree and/or email.

NAME _____

Significant Other (optional) _____

Former GWRRA State and Chapter? Circle Yes or No . If yes, State _____ Chapter _____

GWTA Member and Status: Circle Yes or No . If yes, State _____ Number _____

CONTACT INFORMATION:

NOTE: *The Following will be only used for Phone Tree/Administrative only.*

Home Address: _____

Phone Number: _____

Email Address: _____

SUNSHINE COMMITTEE:

Would you like to receive?

1. Birthday Cards and be noted at the monthly meeting/in the newsletter during your birthday month?

If yes, Month/Date _____

Significant other (optional) Name _____ Month/Date _____.

2. Anniversary Cards and be noted at the monthly meeting/in the newsletter during your anniversary month? If yes, Month/Date/(and Year?) _____

3. We send out Get Well and Sympathy Cards. Is this okay? _____

Please return this form in person or by email to either the CD or any board member.

Thank You for Joining us in our Destination of Friendship.

WASHINGTON CHAPTER GATHERINGS

<u>GWTA Chapter</u>	<u>Group Name</u>	<u>Chapter Director</u>	<u>Meeting Date/ Time</u>	<u>Location</u>
WA-A	Seattle Wings Mascot: Ape	Open Position Phone (425)351-9481 ACD: Jeff Duffield	4th Saturday Breakfast @ 9:00 AM Meeting @ 10:00 AM	Rainbow Cafe 112 E. Main St. Auburn, WA 98002
WA-C	Evergreen Wings	Howie Dickerman (206)571-3273 ACD: Mike Zmiarovich	2 nd Saturday Breakfast @ 08:00AM Meeting @ 09:00AM	Evergreen Lanes 5111 Claremont Way Everett, WA 98203
WA-F	Fun & Friendship Riders	Gary & Vonda Brest (206)852-2625 ACD: Lisa Alberts (253) 350-4594	2 nd Saturday Breakfast @ 8:00AM Meeting @ 9:00AM	(Currently Inactive)
WA-Q	The Q Crew	Steve Henson (360)489-5275	1 st Saturday Breakfast @ 8:00AM Meeting @ 9:00AM	Centerville Café 111 N. Tower Ave. Centralia, WA 98532
WA-U	Okanogan Valley Wings	Teri Mitschelen (509)429-1751 ACD: Mel Caylor (509)322-2546	3rd Saturday Breakfast @ 8:00AM Meeting @ 9:00AM	Status Unknown
<u>GWRRA Chapter</u>	<u>Group Name</u>	<u>Chapter Director</u>	<u>Meeting Date/ Time</u>	<u>Location</u>
WA-L (High Desert Riders) (Independent)	Kennewick Looney Tunes	Gary Dumas Phone: (509) 551-6133 ACD: Tom Denny (509) 582-8779	2nd Saturday Breakfast @ 8:00 AM Gathering @ 9:00 AM	Sterling's Restaurant 2500 Queens gate Drive Richland, WA 99352
WA-N (Independent)	Spokane Wing Nuts	Don & Hope Sundahl Phone: (509)993-5501	2 nd Tuesday Social 6pm November to April. Location TBD	TBD – Call ahead. Spokane, WA
WA-P (Independent)	Kalama	Rose & Bruce Hibbs Rose (360)609-4648 Bruce (360)606-6643	3 rd Wednesday Social at 11am. Weather permitting Call ahead.	Columbian Inn Rest. 698 N Frontage Road Kalama, WA 98625 360-673-7600
WA-R (Independent)	Walla Walla Road Runner	Pat & Von Webb Phone (509) 438-3906 ACD:	1st Saturday Breakfast @ 9:00AM Gathering @ 10:00 AM (Winter Hours)	Clarette's Restaurant 15 S Touchet St. Walla Walla, WA 99362

This list is subject to change.

Please contact the Chapter you wish to visit before going.

Find out what is going on in other GWTA chapters' neck of the woods:

[GWTA - Motorcycle Touring Association](https://www.facebook.com/groups/51175813698)

<https://www.facebook.com/groups/51175813698> currently 2.2K following.

Gold Wing Touring Association 2024 Calendar of Events

*Destination Friendship
Established 1987
"All Bikes Welcome"*

Be sure to check websites:
<https://www.gwta-waa.com> or <https://www.gwta.org> for details on the events.

May 2024

- ☐ May 24 - 27 EWMA Blue Mountain Rendevous in Milton Freewater Oregon.
It will be Memorial day weekend 24-28. Registrations will be sent out the week of February 19. – Mr Webb.

June 2024

- ☐ June 10th - 20th Edelweiss Best of Southern France Tour. Contact Howie of Chapter C.
- ☐ June 22nd – Chaperone the Tour de Blast on Mt St Helens. Volunteers needed.
Contact Rose Hibbs of GWRRA Chapter P at mrsrhibbs@gmail.com. See Flyer Attached.

July 2024

WA Chapter C is going to take a 7 day ride through the Canadian Rockies. Contact Howie if interested.

- ☐ Jul 15~18 - **GOLD RUSH XXXVI: July 15-18, 2024, Bowling Green, KY 42103.**
Sign Up at <https://gwta.org/event/gold-rush/>

September 2024

- ☐ Sep 6~9 GWTA Washington District's week after Labor Day Campout at **Squaw Rock Resort.**

VISITING OUR GWTA CHAPTERS:

Chapter Q in Centralia, The Q Crew

Monthly breakfast meeting at **Centerville Café, 111 N. Tower Ave, Centralia, WA 98531, (360) 736-5159.**
We meet at the McDonald's on South Tacoma Way and Hwy 512 for a 7:00 am kick stands up. 8:00 am Eat - 9:00 am Meet (Changes on occasion, please call Chapter Director Steve Henson to verify).

Chapter C in Everett, Evergreen Wings

Monthly breakfast meeting at **Evergreen Lanes, 5111 Claremont Way, Everett, Washington.**
We meet at the Kent Chevron across from the McDonald's Restaurant on 84th and 212th Streets in Kent, WA.
7:00 am departure for an 8:00 am Eat, 9:00 am Meet. A ride normally follows the meeting.

BLUE MOUNTAIN RENDEZVOUS, MAY 24-27, 2024

EAGLE WINGS MOTORCYCLE ASSOCIATION



Hello, like minded adventurer's;

We invite you to the “Blue Mountain Rendezvous” (sponsored by the Blue Mountain Road Runners” Eagle Wings Motorcycle Assoc. (EWMA) Chapter R.

We hope that you will come and join us this coming Memorial Day weekend May 24-27 for a getaway at the base of the beautiful Blue Mountains at a great place called “Junior Show” grounds in Milton-Freewater Oregon. <https://www.mfjrshow.com/> .

DIRECTIONS; North of Milton-Freewater, Ore. at Junior Show Grounds located on Highway 11, mile post 33, 2.4 miles south of the Washington/Oregon State Line, Highway 11, (behind Kelly's Restaurant & Lounge)

There is a pavilion for meeting, game playing, sit down meals, etc.. Also, a grassed camping area with large tree's, some hook-ups to 30amp, 110v, and non-potable water. Facilities for restrooms with showers freshly rebuilt last year.

Our team will be making you feel right at home, prepping all your meals. Leading rides around the area and into the Blue Mountains also setting up games for you. There will be routes available if you want to ride in a different direction.

If you have an RV, camper, or tent, we have places on site for you (it is limited), so call the phone number on the registration to reserve your spot.

If you want to stay in a motel, please make reservations soon to make sure you have a place. A place to have fun, explore, meet new folks, or just relax. There are towns close and far with history and fun things. Some but not all towns etc. are listed below.

The below are some, but not all Towns & sites. Included approx. miles and time one way from the Show grounds.

Walla Walla Wa	8 miles, War memorial, etc.
Milton-Freewater Ore	2 miles, Frazier Farm Museum.
Pendelton Ore	37 miles, Woolen mill, underground, etc.
Tollgate, Ore	37ish miles, Langdon Lake, Spout Springs, Ore
Elgin Ore	51 miles
Minam Ore	64 miles
Wallow (town) Ore	78 miles
Lostine Ore	85 miles
Enterprise Ore	95 miles
Joseph Ore	102 miles
Wallowa Lake State Park Ore	105 miles (approx. 2hrs 15min)

Also, “**the Rattlesnake loop**” a popular ride.

-Junior Show Grounds to Clarkston WA-129 -105 miles (2hrs) Lewiston ID is just across the bridge).

-Clarkston Wa. to Enterprise Ore. -85 miles (2hrs).

-Enterprise Ore to Junior Show Ore. -95 miles (2hrs) an approx.

Total round trip ride is 286 miles, 6hrs not including stops, fuel, or eats.

Please take the time to fill out the registration and send asap, also please take notice to the early registration postmark date.

We hope that you come and join us.

We don't want to miss anyone that might be waiting for this, so Please send to contacts that I may have missed.

Thank you so much for your help.

Sincerely

Blue Mountain Road Runners
Chapter “R” (32yrs, since 1984)
Charter Chapter EWMA



Editors Note: The Registration is available on our website on the May Calendar of Events.



Come Join the fun--- June 22, 2024

Ride to Johnston Ridge on Mt. St. Helen's and help keep the bicycles safe.

Check out the Website at [Tour de Blast!](#)

Start at Toutle Elementary School between 8-11:00 am

Last Bike in by 4:00 pm ---- With a Pasta feed from 11:00-5:00

Ride the route and check on any bicyclist that appears to need assistance, (whether physically or mechanically). Stay with the rider in case of illness or injury.

DO NOT TRANSPORT

Radio ahead to transponders and wait with rider until help arrives if injured or ill.

Be prepared to help pump up tires, (tubes will be supplied).

Sign-Up by May 15th and receive a free T-Shirt.

For more information or to sign up contact

Rose Hibbs (360) 609-4648 or mrsrhibbs@gmail.com



GWTA WA-C Evergreen Wings 2024 Calendar

Sat Apr 13 8am Breakfast Meeting and Ride Evergreen Lanes, 5111 Claremont Way, Everett
Sat Apr 13 Ride to Tulip Festival Kiwanis Salmon BBQ w/Howie Hillcrest Park Lodge, 1717 S 13th St, Mount Vernon
Tue Apr 23 6:30 Dinner at Razzals Bar & Grill 9327 4th St NE, Lake Stevens WA
Sat Apr 27 Visit Chapter A Mtg, Rainbow Café, Auburn 8am Mariner Park & Ride, 13132 4th Ave, Everett
Sat May 11 8am Breakfast Meeting Evergreen Lanes, 5111 Claremont Way, Everett
Sat May 11 After meeting ride Chuckanut Drive w/Eddie lunch in Bellingham - details TBD
Sat May 18 Day ride to La Conner & Calico Cupboard w/Howie 9am depart from Evergreen Lanes
Fri May 24 May 27 EWMA Blue Mountain Rendezvous Junior Show Grounds, Hwy 11, Milton-Freewater, OR
Sat May 25 Visit Chapter A Mtg, Rainbow Café, Auburn 8am Mariner Park & Ride, 13132 4th Ave, Everett
Sat Jun 01 Ride to Green compound in Desert Aire details are TBD
Sat Jun 08 8am Breakfast Meeting Evergreen Lanes, 5111 Claremont Way, Everett
Sat Jun 08 Ride to Deception Falls w/Bob A (falls are located near Stevens Pass)
Mon Jun 10 Jun 20 Edelweiss Best of Southern France Tour Nice, France
Sat Jun 22 Visit Chapter A Mtg, Rainbow Café, Auburn 8am Mariner Park & Ride, 13132 4th Ave, Everett
Tue Jun 25 6:30 Dinner at Grazie Ristorante 23207 Bothell Everett Hwy, Bothell
Sat Jun 29 Chapter A Ice Cream Ride details TBD
Sat Jul 06 Day ride to Neah Bay w/Mike Z 7:30 Meet at Edmonds Ferry dock
Sat Jul 13 8am Breakfast Meeting Evergreen Lanes, 5111 Claremont Way, Everett
Sat Jul 13 Ride to Winthrop for lunch w/Justin leave from breakfast meeting
Sun Jul 14 STP - Seattle to Portland Bicycle Ride Portland Bridge (Coordinate with Jeff from Chapter A)
Mon Jul 15 Jul 18 GWTA Gold Rush - Bowling Green KY <https://gwta.org/event/gold-rush/>
Mon Jul 15 Jul 22 One week ride to Canadian Rockies (Jasper) 9am depart from Smokey Point Rest Area
Tue Jul 23 6:30 Dinner at Big Lake Bar & Grill 18247 WA-9, Mt Vernon
Sat Jul 27 Visit Chapter A Mtg, Rainbow Café, Auburn 8am Mariner Park & Ride, 13132 4th Ave, Everett
Fri Aug 02 Aug 04 Three day Men's Ride to BC (Whistler, Hope) 9am depart from Smokey Point Rest Area
Sat Aug 10 8am Breakfast Meeting Evergreen Lanes, 5111 Claremont Way, Everett
Sat Aug 10 Three Pass Blast (Hwy 2, 97, 90) w/Walt leave from breakfast meeting
Sat Aug 17 Ride to Artist Point (Mt Baker Hwy) w/Walt 9am depart from Smokey Point Rest Area
Tue Aug 20 6:30 Dinner at Emory's on Silver Lake 11830 19th Ave SE, Everett
Sat Aug 24 Aug 25 Overnight Ride to Government Camp, OR 9am depart from Mariner Park & Ride
Sat Aug 24 Visit Chapter A Mtg, Rainbow Café, Auburn 8am Mariner Park & Ride, 13132 4th Ave, Everett
Sat Aug 31 Chapter A Ice Cream Ride details TBD
Fri Sep 06 Sep 09 GWTA Campout weekend Squaw Rock RV Resort & Campground, Naches WA
Sat Sep 14 8am Breakfast Meeting Evergreen Lanes, 5111 Claremont Way, Everett
Sat Sep 14 Ride to Leavenworth w/Justin leave from breakfast meeting
Sun Sep 22 Oyster Run Anacortes WA
Sat Sep 28 Visit Chapter A Mtg, Rainbow Café, Auburn 8am Mariner Park & Ride, 13132 4th Ave, Everett
Sat Oct 12 8am Breakfast Meeting Evergreen Lanes, 5111 Claremont Way, Everett
Sat Oct 12 Ride to Windy Ridge w/DJ (near Mt St Helens)
Tue Oct 22 6:30 Dinner at McMenamin's Bothell 18607 Bothell Way NE, Bothell
Sat Oct 26 Visit Chapter A Mtg, Rainbow Café, Auburn 8am Mariner Park & Ride, 13132 4th Ave, Everett
Sat Nov 09 8am Breakfast Meeting Evergreen Lanes, 5111 Claremont Way, Everett
Sun Nov 17 2pm Planning Meeting then go out to eat Everett Powersports - upstairs meeting room
Sat Nov 23 Visit Chapter A Mtg, Rainbow Café, Auburn 8am Mariner Park & Ride, 13132 4th Ave, Everett
Sat Nov 30 Chapter A Ice Cream Ride details TBD
Sat Dec 14 8am Breakfast Meeting Evergreen Lanes, 5111 Claremont Way, Everett
Sun Dec 15 6pm Christmas Party at Village Taphouse & Grill 1204 3rd St, Marysville

EVERYTHING ON THIS CALENDAR IS SUBJECT TO CHANGE.....questions/comments/changes...contact howiedickerman@outlook.com

Motorcycles and / or Parts Buy / Sell / Donate

Ads will be listed for three (3) months or until transaction completion!

For GWRRA and GWTA Members Ads Free!

Got something to buy, sell, or trade? Got something on your wish list?

Got something you wish to donate or give away?

FOR SALE:

Two sets of Saddle Bags for 2001 - 2010 Goldwings

One Black and One Dark Red.

They are from "New" Wings that were triked at a Honda Dealer.

Asking \$100 each.



Don Hatley

dhatwaa@comcast.net

FOR SALE:

2002 Yellow Honda Goldwing 1800 with matching unigo trailer for SALE



We are/were part of GWTA Chapter B for Washington State. We have dissolved our chapter but still have friends we will have for life. I am no longer able to ride and want a good home for her. She has so much more life in her. She is a good bike and would love to have someone who would enjoy her get her. She has a few miles on her but in excellent condition, she has many more miles in her.

2002 Honda Goldwing 1800 with matching unigo trailer. 145,000 miles, in excellent condition and runs exceptional. Plenty of upgrades, everything works great, please give us a call and we can answer any questions you may have.

Thank you,
Larry and Debi Selfridge

425-315-6892





Thanks for Reading our Newsletters!

Got an Article, Story, Funny or Buy/Sell/Give Ad?

Be sure to submit by midnight of the 20th of the month to be included in that month's newsletter.

Send your comments, questions, and submittals to Newsletter Editor Jocelyn Piechowiak.

jocelynpiechowiak@hotmail.com

Call or Text 206-249-6310.

THE END.